

Radiation-Hardened 8-Channel Level Translator with cold sparing

1 GENERAL DESCRIPTION

The AP54RHC804 is a radiation-hardened by design 8-channel level translator with 3-state outputs. It delivers high resiliency to single-event effects (SEE) and to a total ionizing dose (TID) to 30 krad (Si). This device is a member of the Apogee Semiconductor AP54RHC logic family. It operates across a 1.4 V to 5.5 V range on both of its supply voltage inputs, V_{CCA} and V_{CCY} .

Zero-power penalty™ cold sparing is supported. A proprietary output stage and robust power-on reset (POR) circuit allow the AP54RHC804 to be cold-spared in any redundant configuration with no static power loss. The redundant output stage also features a high drive capability with low static power loss.

Ordering information may be found in Table 10 on Page 18. A Geosynchronous Earth Orbit (GEO) variant with 300 krad (Si) TID assurance is also available in the AF54RHC804.

1.1 DEVICE INFORMATION

PART NUMBER	GRADE	Package
AP54RHC804ANT	A-Grade Flight (LEO)	TSSOP-20 Plastic mass 74 mg
AP54RHC804BNT	B-Grade Flight (LEO)	
AP54RHC804CNT	C-Grade Flight (LEO)	
AP54RHC804ENT	E-Grade (Evaluation)	

1.2 APPLICATIONS

- Voltage level translation
- LVCMOS FPGA I/O level translation
- Telemetry data interfacing
- Multi-voltage system level interfacing
- Sensor integration
- [Bi-directional level shifting](#)

1.3 FEATURES

- SEL immune to LET of 75 MeV-cm²/mg
- 1.4 V to 5.5 V operation
- Inputs tolerant up to 5.5 V at any V_{CCA}
- Provides logic-level translation to V_{CCY}
- Cold sparing Inputs and Outputs
- TID RLAT 30 krad (Si) at 5.5 V
- Operating temperature range -55 °C to +125 °C
- Meets NASA's ASTM E595 outgassing specification
- Moisture sensitivity level 1 (unlimited)

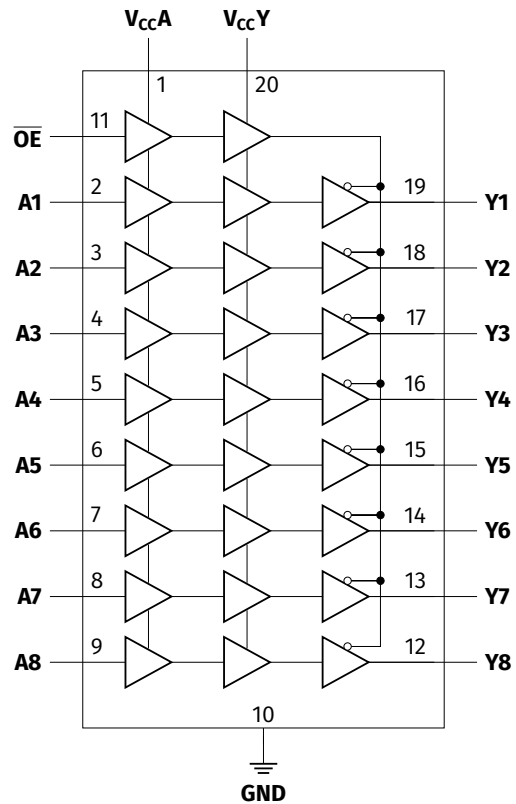


Figure 1: AP54RHC804 Logic Diagram

CONTENTS

1	General Description	1	6	Typical Characteristics	11
1.1	Device Information	1	6.1	I _{CCY}	11
1.2	Applications	1	6.2	I _{CCA}	12
1.3	Features	1			
2	Acronyms and Abbreviations	2	7	Detailed Description	13
3	Logic Data	3	8	Applications Information	14
4	Pin Configuration	4	8.1	Use in Cold-Sparing Configurations	15
5	Electrical Characteristics	5	8.2	Power Supply Recommendations	16
5.1	Absolute Maximum Ratings	5	8.3	Application Tips	16
5.2	Recommended Operating Conditions	6	9	Packaging Information	17
5.3	Static Characteristics	7	10	Ordering Information	18
5.4	Dynamic Characteristics	9	11	Revision History	19
5.5	Radiation Resilience	9	12	Legal	19
5.6	Characteristics Measurement Information	10			

LIST OF TABLES

1	Truth Table	3	6	DC Electrical Characteristics	7
2	Device Pinout	4	7	AC Electrical Characteristics, C _L = 50 pF	9
3	Absolute Maximum Ratings	5	8	AC Electrical Characteristics	9
4	Recommended Operating Conditions	6	9	Radiation Resilience Characteristics	9
5	Thermal Information	6	10	Ordering Information	18

LIST OF FIGURES

1	AP54RHC804 Logic Diagram	1	10	Output Pin Structure	13
2	Device Pinout	4	11	Level Shifting utilizing AP54RHC804	14
3	Load Circuit for 3-State Outputs	10	12	Multi Domain Level Shifting using AP54RHC804 and AP1016	15
4	Propagation Delay	10	13	Bi-directional Level Shifting using Two AP54RHC804 Devices	15
5	Enable and Disable Time Measurements	10	14	Two-Path Cold-Sparing Configuration	16
6	I _{CCY} before TID	11	15	Package Mechanical Drawing	17
7	I _{CCY} after 30 krad TID	11	16	Part Number Decoder	18
8	I _{CCA} after 30 krad TID	12			
9	Input Pin Structure	13			

2 ACRONYMS AND ABBREVIATIONS

ESD	Electrostatic Discharge	SET	Single Event Transient
POR	Power On Reset	TID	Total Ionizing Dose
RHA	Radiation Hardness Assurance	TMR	Triple Modular Redundancy
SEE	Single Event Effects	CDM	Charged-device Model
SEL	Single Event Latchup	HBM	Human-body Model

3 LOGIC DATA

The AP54RHC804 truth table is found in [Table 1](#). **H** indicates HIGH logic level, **L** indicates LOW logic level, **X** indicates DON'T CARE and **Z** indicates HIGH-Z (TRI-STATE). Subscript **n** reflects one of the eight buffers in the device (1 to 8).

Table 1: AP54RHC804 Device Truth Table

Inputs		Output
\overline{OE}	A_n	Y_n
L	L	L
L	H	H
H	X	Z

4 PIN CONFIGURATION

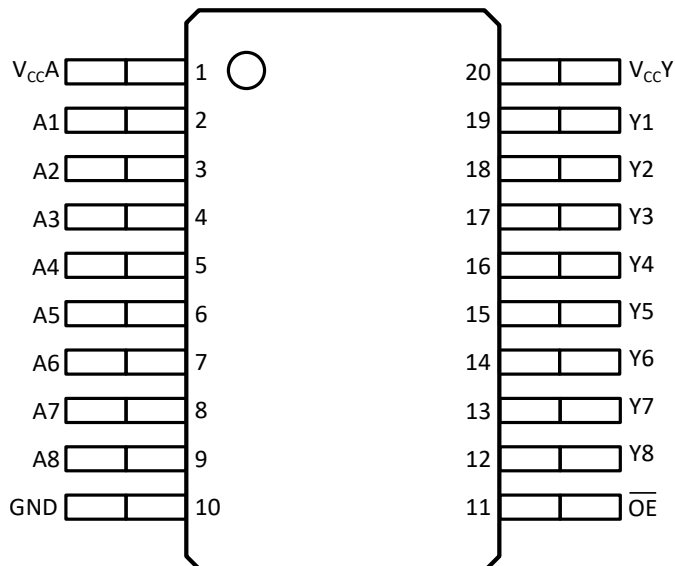


Figure 2: AP54RHC804 Device Pinout

Table 2: AP54RHC804 Device Pinout

PIN NAME(S)	PIN NUMBER(S)	DESCRIPTION
A1 A2 A3 A4 A5 A6 A7 A8	2 3 4 5 6 7 8 9	Signal Inputs. Referenced to V_{CCA} .
Y1 Y2 Y3 Y4 Y5 Y6 Y7 Y8	19 18 17 16 15 14 13 12	Signal Outputs. Referenced to V_{CCY} .
\overline{OE}	11	Output Enable (active-low). Referenced to V_{CCA} .
V_{CCA}	1	Positive Voltage Supply (A Side)
V_{CCY}	20	Positive Voltage Supply (Y Side)
GND	10	Ground

5 ELECTRICAL CHARACTERISTICS

The sign convention for current follows JEDEC standards with negative values representing current sourced from the device and positive values representing current sunk into the device. All parameters in this section are specified across the entire operating temperature range unless otherwise specified. For A-grade flight and B-grade flight parts, all parameters are specified over the entire recommended voltage range of 1.4 V to 5.5 V. For C-grade flight and E-grade Evaluation parts, all parameters are specified over the voltage range of 1.65 V to 5.5 V.

5.1 ABSOLUTE MAXIMUM RATINGS

Excursions beyond the values listed in [Table 3](#) may cause permanent damage to the device. Proper function of the device cannot be guaranteed if these values are exceeded, and long-term device reliability may be affected. Functionality of the device at these values, or beyond those listed in [Recommended Operating Conditions](#) ([Table 4](#)) is not guaranteed.

Table 3: Absolute Maximum Ratings

SYMBOL	PARAMETER	VALUE	UNITS
V_{CCA}, V_{CCY}	Supply Voltage	-0.5 to +5.5	V
V_I	Input voltage range	-0.5 to +5.5	V
V_O	Output voltage range	-0.5 to +5.5	V
$I_{IK} (V_I < 0)$	Input clamp current	100	mA
I_O	Continuous output current (per pin)	100	mA
I_{CC}	Maximum supply current	100	mA
V_{ESD}	ESD Voltage	HBM	1000 V
		CDM	500 V
T_J	Operating junction temperature range	-55 to +150	°C
T_{STG}	Storage temperature range	-65 to +150	°C

5.2 RECOMMENDED OPERATING CONDITIONS

All parameters are specified across the entire operating temperature range unless otherwise specified. For A-grade flight and B-grade flight parts, all parameters are specified over the entire recommended voltage range of 1.4 V to 5.5 V. For C-grade flight and E-grade Evaluation parts, all parameters are specified over the voltage range of 1.65 V to 5.5 V.

Table 4: Recommended Operating Conditions

SYMBOL	PARAMETER	MIN	MAX	UNITS	
V_{CCA}, V_{CCY}	Supply voltage (A-grade flight, B-grade flight)	1.4	5.5	V	
V_{CCA}, V_{CCY}	Supply voltage (C-grade flight, E-grade Evaluation)	1.65	5.5	V	
V_I	Input voltage range	0	5.5	V	
V_O	Output voltage range	0	V_{CCY}	V	
V_{IH}	HIGH-level input voltage	$V_{CCA} = 1.4$ to 1.6 V	1.12	-	V
		$V_{CCA} = 1.65$ to 1.95 V	1.4	-	
		$V_{CCA} = 2.3$ to 2.7 V	1.9	-	
		$V_{CCA} = 3.0$ to 3.6 V	2.5	-	
		$V_{CCA} = 4.5$ to 5.5 V	3.8	-	
V_{IL}	LOW-level input voltage	$V_{CCA} = 1.4$ to 1.6 V	-	0.32	V
		$V_{CCA} = 1.65$ to 1.95 V	-	0.4	
		$V_{CCA} = 2.3$ to 2.7 V	-	0.6	
		$V_{CCA} = 3.0$ to 3.6 V	-	0.9	
		$V_{CCA} = 4.5$ to 5.5 V	-	1.35	
I_{OH}	HIGH-level output current	$V_{CCY} = 1.4$ to 1.6 V	-	-2	mA
		$V_{CCY} = 1.65$ to 1.95 V	-	-4	
		$V_{CCY} = 2.3$ to 2.7 V	-	-8	
		$V_{CCY} = 3.0$ to 3.6 V	-	-16	
		$V_{CCY} = 4.5$ to 5.5 V	-	-24	
I_{OL}	LOW-level output current	$V_{CCY} = 1.4$ to 1.6 V	-	2	mA
		$V_{CCY} = 1.65$ to 1.95 V	-	4	
		$V_{CCY} = 2.3$ to 2.7 V	-	8	
		$V_{CCY} = 3.0$ to 3.6 V	-	16	
		$V_{CCY} = 4.5$ to 5.5 V	-	24	
t_r, t_f	Input rise or fall time (10% - 90%)	$V_{CCA} = 1.4$ to 1.6 V	-	2000	ns
		$V_{CCA} = 1.65$ to 1.95 V	-	1000	
		$V_{CCA} = 2.3$ to 2.7 V	-	600	
		$V_{CCA} = 3.0$ to 3.6 V	-	500	
		$V_{CCA} = 4.5$ to 5.5 V	-	400	

Table 5: Thermal Information

SYMBOL	PARAMETER	MIN	TYP	MAX	UNITS
T_j	Operating junction temperature	-55	-	+125	°C
$R_{\theta JA}$	Junction to ambient thermal resistance	-	100	-	°C/W

5.3 STATIC CHARACTERISTICS

All parameters are specified across the entire operating temperature range unless otherwise specified. For A-grade flight and B-grade flight parts, all parameters are specified over the entire recommended voltage range of 1.4 V to 5.5 V. For C-grade flight and E-grade Evaluation parts, all parameters are specified over the voltage range of 1.65 V to 5.5 V.

Table 6: DC Electrical Characteristics

SYMBOL	PARAMETER	CONDITIONS	V _{CCY}	MIN	TYP	MAX	UNITS
V _{OL}	LOW-Level Output Voltage ⁽¹⁾	I _O = 100 μA	1.4 to 5.5 V	-	0.02	0.05	V
		I _O = 1 mA	1.4 to 5.5 V	-	0.05	0.15	V
		I _O = 2 mA	1.4 V	-	0.18	0.4	V
		I _O = 4 mA	1.65 V	-	0.27	0.8	V
			2.3 V	-	0.3	0.6	V
			3.0 V	-	0.2	0.4	V
			4.5 V	-	0.2	0.4	V
		I _O = 8 mA	2.3 V	-	0.6	1.0	V
			3.0 V	-	0.4	0.8	V
			4.5 V	-	0.3	0.6	V
		I _O = 16 mA	3.0 V	-	1.0	1.4	V
			4.5 V	-	1.1	1.2	V
		I _O = 24 mA	4.5 V	-	1.1	1.5	V
V _{OH}	HIGH-Level Output Voltage ⁽¹⁾	I _O = -100 μA	1.4 to 5.5 V	V _{CCY} - 0.1	V _{CCY} - 0.02	-	V
		I _O = -1 mA	1.4 to 5.5 V	V _{CCY} - 0.15	V _{CCY} - 0.08	-	V
		I _O = -2 mA	1.4 V	0.9	1.2	-	V
		I _O = -4 mA	1.65 V	1	1.35	-	V
			2.3 V	1.8	2.0	-	V
			3.0 V	2.6	2.7	-	V
			4.5 V	4.2	4.4	-	V
		I _O = -8 mA	2.3 V	1.4	1.7	-	V
			3.0 V	2.2	2.5	-	V
			4.5 V	3.9	4.1	-	V
		I _O = -16 mA	3.0 V	1.5	2.0	-	V
			4.5 V	3.3	3.8	-	V
		I _O = -24 mA	4.5 V	3.0	3.5	-	V
I _{CCY}	Quiescent supply current	V _I = V _{CCA} or GND OE = GND I _O = 0 mA	1.4 V	-	25	55	μA
			1.6 V	-	35	55	μA
			1.95 V	-	45	65	μA
			2.7 V	-	80	105	μA
			3.6 V	-	115	145	μA
			5.5 V	-	215	250	μA
		Same as above; T _a = 25°C, Post TID	5.5 V	-	275	385	μA
I _I	Input current	V _I = V _{CCA} or GND	1.4 to 5.5 V	-1	-	1	μA
I _{oz}	Output leakage current ⁽²⁾	V _I = V _{CCY} or GND OE = V _{CCA}	1.4 to 5.5 V	-	-	±2.5	μA

Table 6: DC Electrical Characteristics continued

SYMBOL	PARAMETER	CONDITIONS	V _{CCY}	MIN	TYP	MAX	UNITS
I _{OFF}	Pwrdown current ⁽³⁾	V _I = GND to 5.5 V	OFF	-	-	5	μA
I _{CC A}	Quiescent supply current	V _I = V _{CC A} or GND I _O = 0 mA	1.4 V	-	5	25	μA
			1.6 V	-	9	25	μA
			1.8 V	-	10	30	μA
			2.7 V	-	15	45	μA
			3.5 V	-	20	55	μA
			5.5 V	-	30	100	μA

(1) V_{CC A} = 1.4 to 5.5 V for these conditions

(2) V_{CC Y} = 0 to 5.5 V for these conditions

(3) V_{CC A} is at GND potential

5.4 DYNAMIC CHARACTERISTICS

All parameters are specified across the entire operating temperature range unless otherwise specified. For A-grade flight and B-grade flight parts, all parameters are specified over the entire recommended voltage range of 1.4 V to 5.5 V. For C-grade flight and E-grade Evaluation parts, all parameters are specified over 1.65 V to 5.5 V.

Table 7: AC Electrical Characteristics. $C_L = 50$ pF

Symbol	Parameter	V_{CCA}	V_{CCY}										Units
			1.5 ±0.1 V		1.8 ±0.15 V		2.5 ±0.2 V		3.3 ±0.3 V		5 ±0.5 V		
			TYP	MAX	TYP	MAX	TYP	MAX	TYP	MAX	TYP	MAX	
t_{pd}	Propagation Delay (Input A to Output Y)	1.5 ±0.1 V	24.5	60	15.6	41	10.6	23	8.9	20	8.2	18	ns
		1.8 ±0.15 V	18.5	60	11.8	25	7.9	15	6.2	13	5.8	11	ns
		2.5 ±0.2 V	18	60	11.3	25	7.4	15	5.6	13	4.3	11	ns
		3.3 ±0.3 V	17.8	60	11.2	25	7.2	15	5.4	13	4.2	11	ns
		5 ±0.5 V	17.7	60	11.1	25	7.1	15	5.3	13	3.9	11	ns
t_{dis}	Output Disable Time (Input \overline{OE} to Output Y)	1.5 ±0.1 V	30.1	45	25.9	40	22.6	37	21.8	35	21.8	33	ns
		1.8 ±0.15 V	27.3	80	18.3	53	17.2	41	17.1	35	18.2	25	ns
		2.5 ±0.2 V	26.8	80	17.9	53	16.7	41	16.3	35	16.2	25	ns
		3.3 ±0.3 V	26.1	80	17.7	53	16.6	41	16.1	35	15.9	25	ns
		5 ±0.5 V	26	80	17.7	53	16.5	41	16.1	35	15.9	25	ns
t_{en}	Output Enable Time (Input \overline{OE} to Output Y)	1.5 ±0.1 V	56.5	91	38.6	69	24.4	42	20.9	36	19.3	31	ns
		1.8 ±0.15 V	47	80	21.7	53	17.3	41	15.5	35	15.1	25	ns
		2.5 ±0.2 V	46.5	80	21.4	53	16.9	41	15.0	35	13.7	25	ns
		3.3 ±0.3 V	46.3	80	21.3	53	16.8	41	14.9	35	13.5	25	ns
		5 ±0.5 V	46.4	80	21.4	53	17.0	41	15.0	35	13.6	25	ns

Table 8: AC Electrical Characteristics

SYMBOL	PARAMETER	CONDITIONS	V_{CCY}	MIN	TYP	MAX	UNITS
t_{sk}	Channel-to-channel skew ⁽¹⁾	$C_L = 50$ pF	1.4 to 5.5 V	-	-	1	ns
C_{in}	Input Capacitance ⁽¹⁾	$V_I = V_{CC}$ or GND	1.4 to 5.5 V	-	2	4	pF
C_{pd}	Power Dissipation Capacitance ⁽¹⁾	$I_O = 0$ mA, $f = 1$ MHz	5.5 V	-	40	-	pF

⁽¹⁾ guaranteed by design

5.5 RADIATION RESILIENCE

For detailed radiation testing reports, please contact Apogee Semiconductor at sales@apogeesemi.com.

Table 9: Radiation Resilience Characteristics

PARAMETER	CONDITIONS	VALUE	UNITS
Total Ionizing Dose (TID)	Please contact Apogee Semiconductor for test report.	30	krad (Si)
SEL Onset LET Threshold	Please contact Apogee Semiconductor for test report.	≥75	MeV-cm ² /mg

5.6 CHARACTERISTICS MEASUREMENT INFORMATION

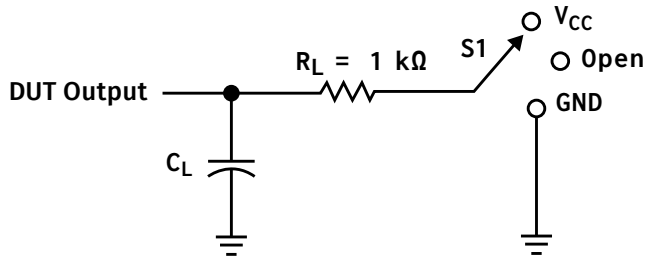


Figure 3: Load Circuit for 3-State Outputs

TEST	S1
t_{pd}	GND
t_{PLZ} , t_{PZL}	V_{CC}
t_{PHZ} , t_{PZH}	GND

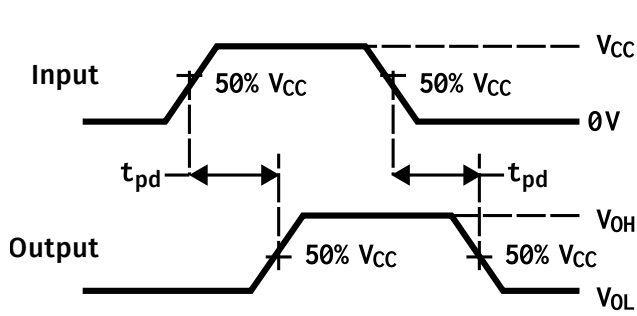


Figure 4: Propagation Delay Measurement

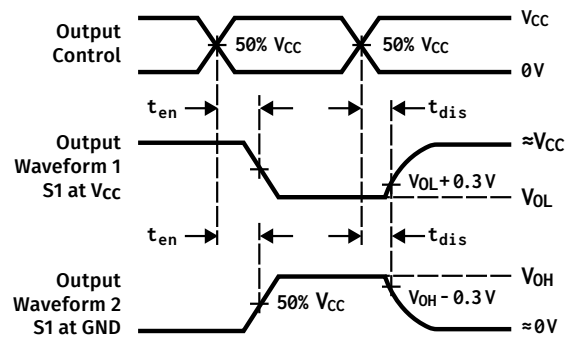


Figure 5: Enable and Disable Time Measurements

6 TYPICAL CHARACTERISTICS

6.1 I_{CCY}

Figure 6 shows the I_{CCY} current before TID exposure and Figure 7 shows the I_{CCY} current after 30 krad TID exposure.

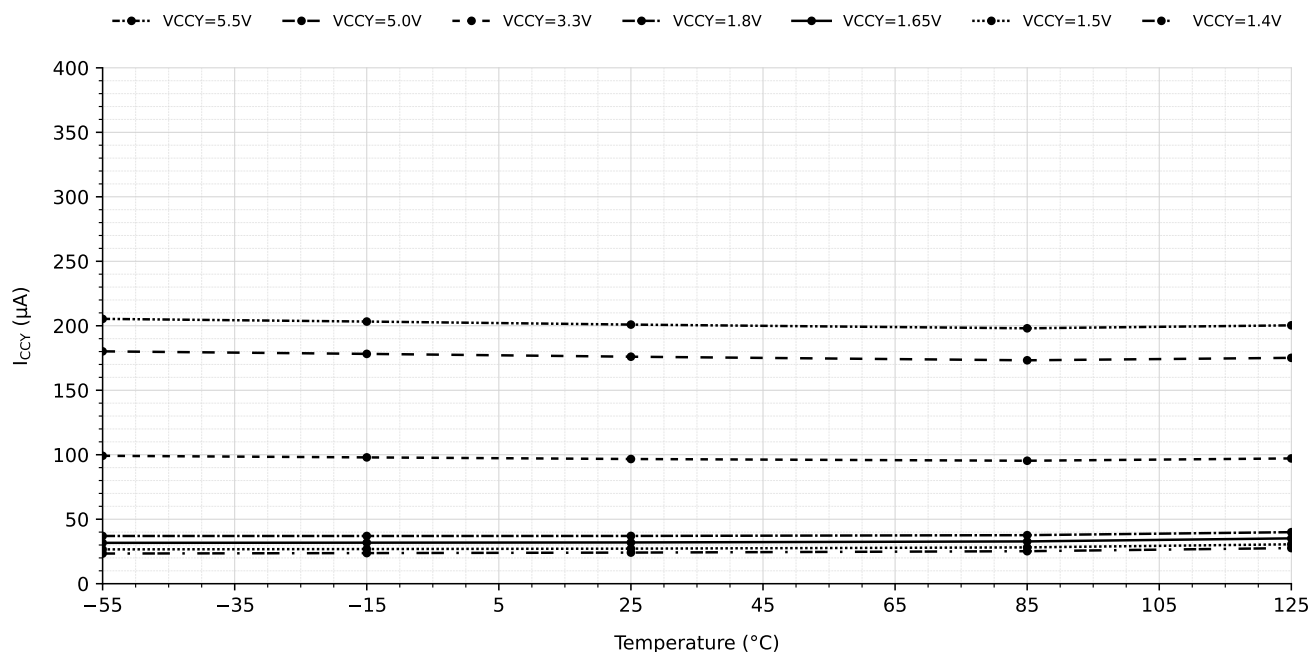


Figure 6: I_{CCY} before TID exposure

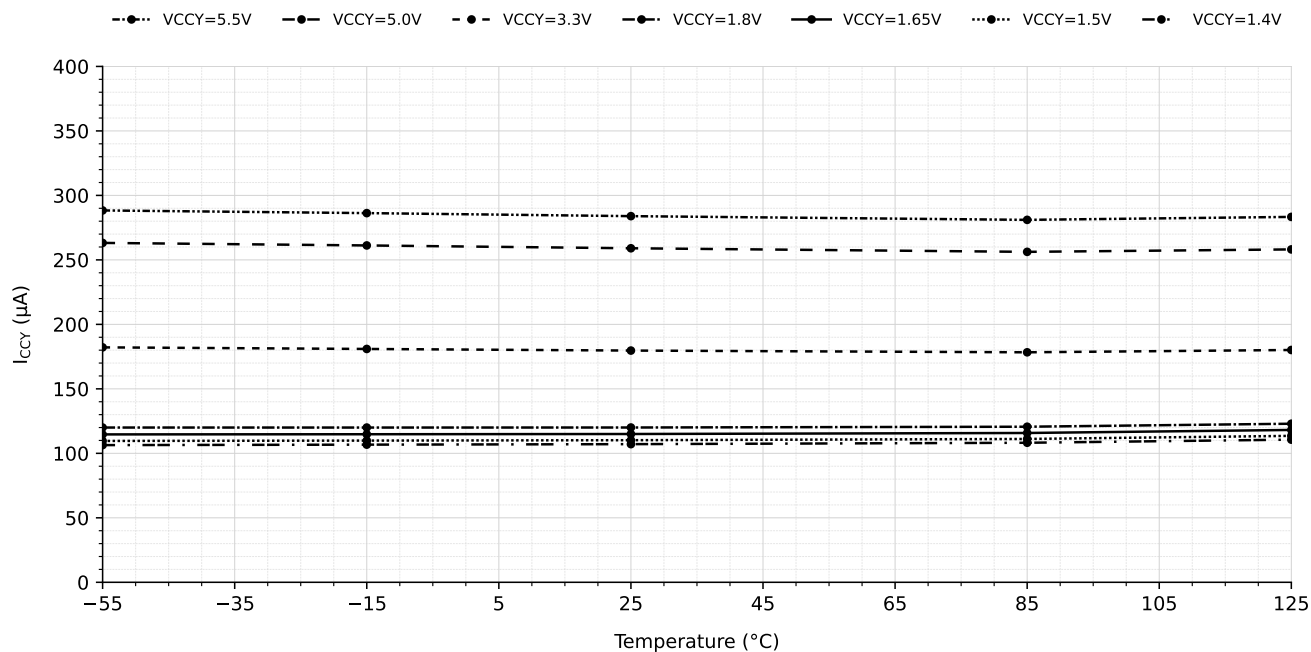


Figure 7: I_{CCY} after 30 krad TID exposure

6.2 I_{CC}A

Figure 8 shows the I_{CC}A current. The I_{CC}A current is not significantly affected by TID exposure.

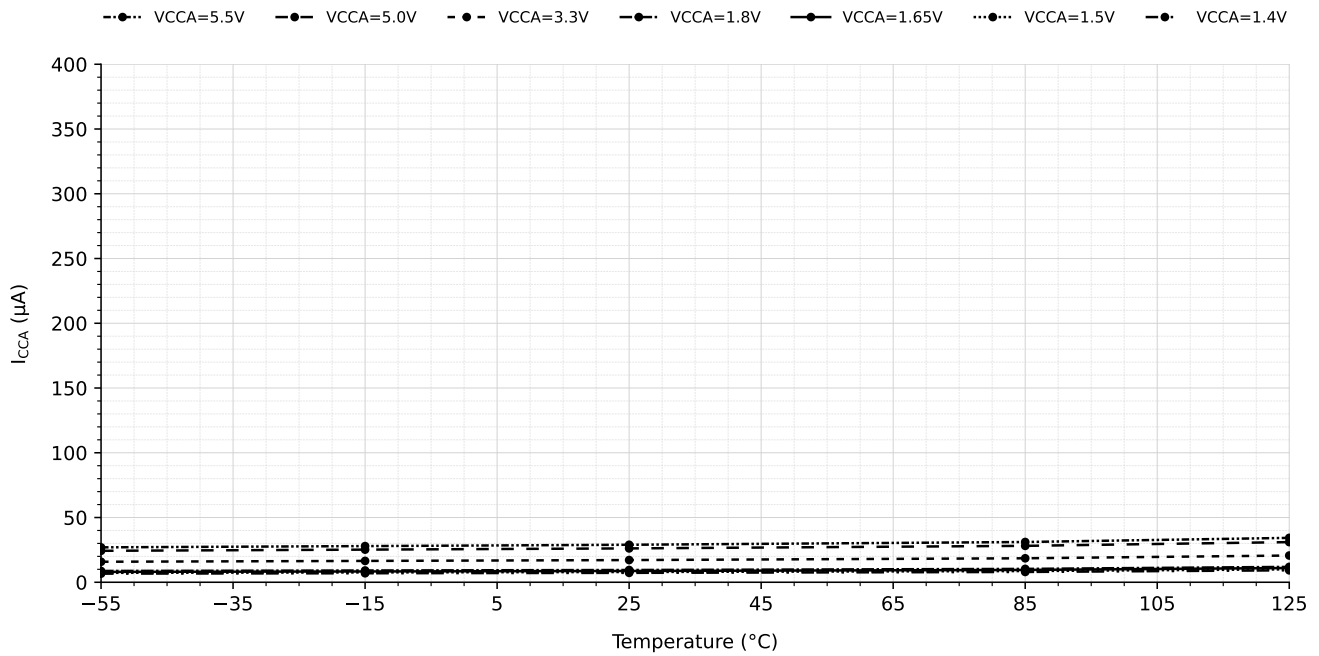


Figure 8: I_{CC}A after 30 krad TID exposure

7 DETAILED DESCRIPTION

The AP54RHC804 is an 8-channel level translator with 3-state outputs designed to operate from a wide supply voltage of 1.4 to 5.5 V with fully redundant input and output stages, providing for superior radiation resilience.

The output and input stages are constructed with transient-activated clamps (Figure 9, Figure 10) that prevent inadvertent biasing of the V_{CC} power rail through parasitic diodes inherent to conventional input, output, and ESD circuits. The IC also incorporates an internal power-on reset (POR) circuit guaranteeing correct operation at power supply voltages as low as 1.4V.

The AP54RHC family's I/O protection circuitry allows for cold sparing configurations as it avoids a leakage current penalty on inputs and outputs while in a power-down state. This can result in considerable power savings in systems where multiple-path redundancy is employed. The ESD clamp circuits for this logic family are designed to support Class 1C ESD levels of 1 kV HBM and 500 V CDM.

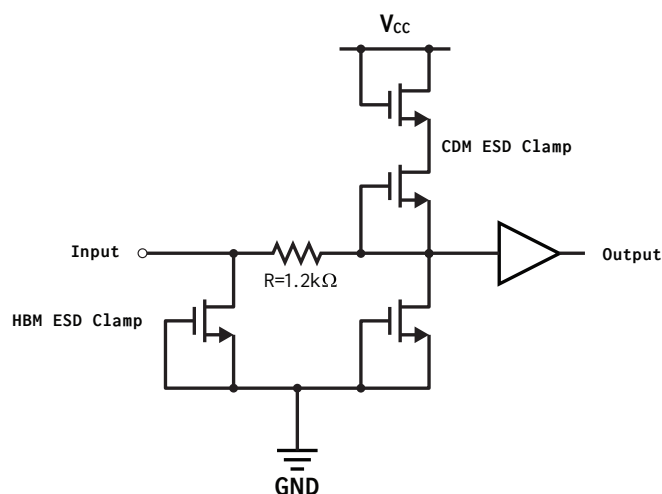


Figure 9: Input Pin Structure

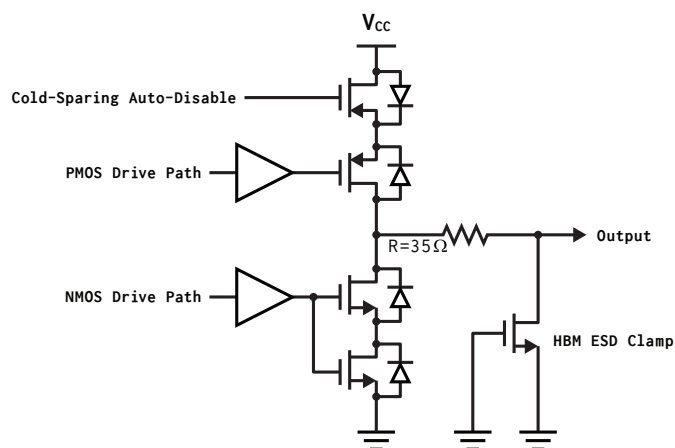


Figure 10: Output Pin Structure

8 APPLICATIONS INFORMATION

The AP54RHC804 provides a simple and robust means of interfacing digital logic between different voltage levels and domains. It can shift logic signals up from a lower voltage to a higher voltage or shift signals down from higher to lower voltages.

It offers several features that make interfacing between different domains simple. First, the absence of an input supply voltage results in a tri-state condition at the output. Second, the outputs may also be tri-stated through assertion of the \overline{OE} pin, which can be tied with power-supply enables or other control signals.

In an application utilizing a modern FPGA with 1.5 V I/O buffers that needs to interface to systems running at higher voltages (i.e. 5 V), the AP54RHC804 can be used to shift these signals to a range appropriate for the FPGA. The AP54RHC804 provides integrated triple modular redundancy (TMR), as well as SET resiliency on each buffer. In the event the 5 V supply is off, the AP54RHC804 will automatically tri-state the output buffers. The \overline{OE} pin of the device can be tied to the FPGA power-enable logic such that \overline{OE} is de-asserted when the 1.5 V I/O rail is not present. [Figure 11](#) shows an example of a Versal FPGA utilizing two AP54RHC804 and an AP54RHC301 majority voter to add additional redundancy for critical control and telemetry signals with error feedback. See the [AP54RHC301 product folder](#)

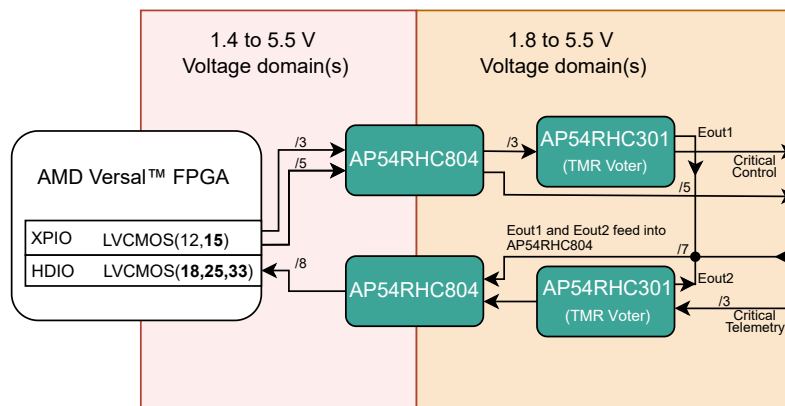


Figure 11: Level Shifting utilizing AP54RHC804

[Figure 12](#) shows a multi-domain level shifting application using AP54RHC804 and an APIO16 radiation hardened I/O expander. In this configuration, the APIO16 is used to level shift to and from the low voltage 1.5 V domain to the 3.3 V domain. The AP54RHC804s are used to level shift to and from the 3.3 V domain to the 5 V domain. The APIO16 provides 16 additional input or output channels that can be used to expand the I/O capabilities of a processor or FPGA with limited I/O resources. It can be controlled via a simple I²C or SPI interface. See the [APIO16 product folder](#) for more information.

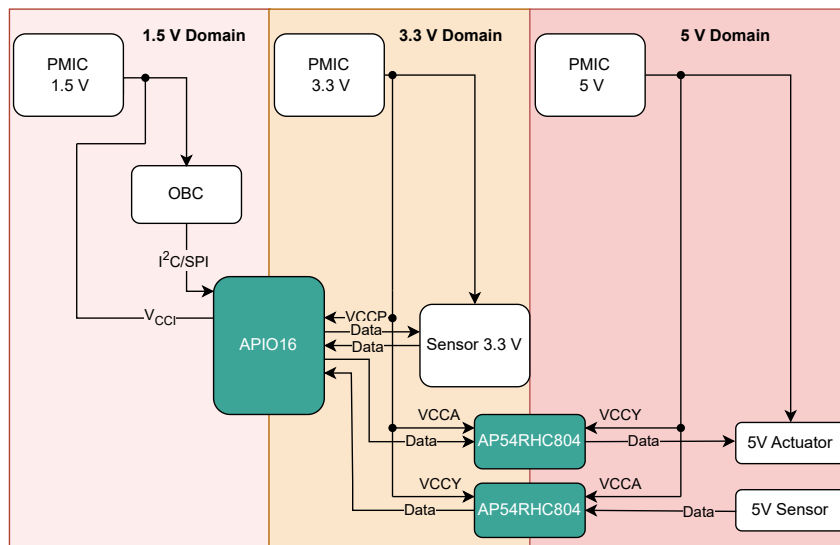


Figure 12: Multi Domain Level Shifting using AP54RHC804 and APIO16

Two AP54RHC804 devices can be used in conjunction to create a bi-directional level shifter. In this application, the \overline{OE} signal of one of the level shifters is driven by a control signal, and the \overline{OE} of the second level shifter is driven by an inverted version of this signal, so that only one device is enabled at a time. The outputs of the non-enabled device will be tri-stated, enabling the same PCB lines to be used to connect both sides of the bi-directional level shifter. The \overline{OE} signal is referenced to the higher voltage domain since it is acceptable to overdrive the \overline{OE} signal to the lower voltage domain device.

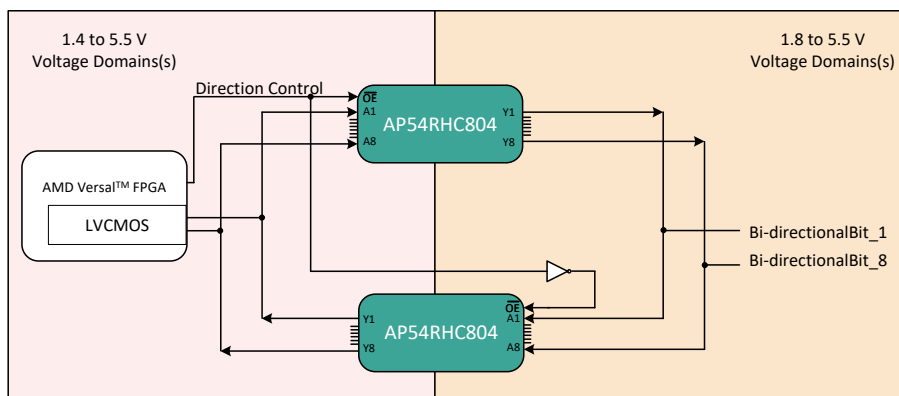


Figure 13: Bi-directional Level Shifting using Two AP54RHC804 Devices

8.1 USE IN COLD-SPARING CONFIGURATIONS

As the AP54RHC family is radiation-hardened by design and includes internal TMR, it can be utilized in high-reliability applications without additional supporting circuitry or devices. Nonetheless, some application requirements call for fully-redundant designs, where an “A” and a “B” device are required, often on separate power rails.

With the cold sparing capability of the AP54RHC family, fully redundant “A” and “B” functions may be placed in parallel (Figure 14) running off redundant power supplies. The inputs and outputs on each one of these functions are assumed to be based on the AP54RHC family, allowing for direct parallel connection without unwanted leakage current paths during cold sparing. In the event of a failure in power supply A or within function A,

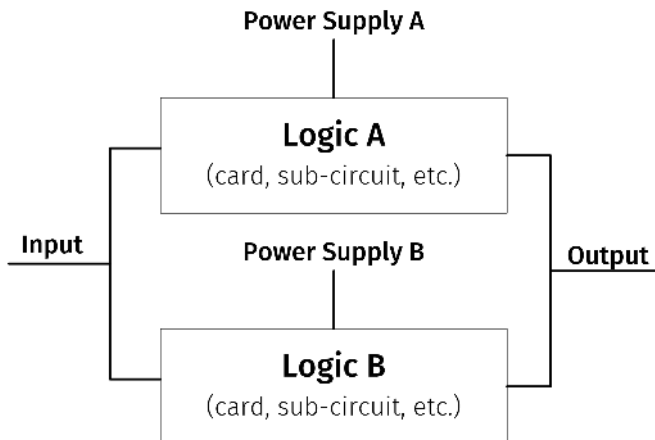


Figure 14: Two-Path Cold-Sparing Configuration

the system can simply shut power supply A off and switch on power supply B, without requiring additional input or output switching or configuration changes.

8.2 POWER SUPPLY RECOMMENDATIONS

This device can operate at any voltage within the range specified in [Table 4 Recommended Operating Conditions](#).

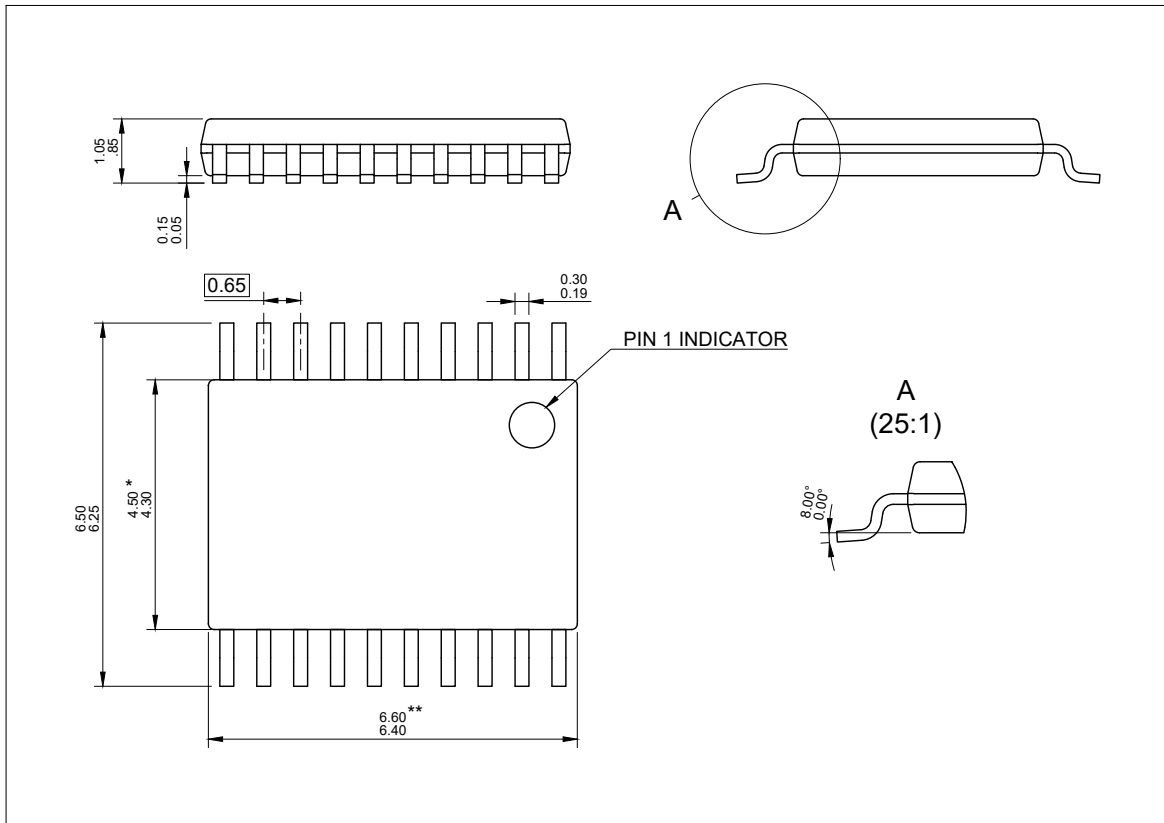
At a minimum, a 16 VDC (or higher), X7R-rated 0.1 μ F ceramic decoupling capacitor should be placed near (within 1 cm) the V_{CC} pins of the device.

8.3 APPLICATION TIPS

Unused **inputs** must **not** be left floating. They may be connected to either a low (GND) or high (V_{CCA}) bias to provide a known state at the input of the device. Resistors may be used to tie off unused inputs. In the event of a design change, such resistors can be removed, thereby allowing use of the inputs without having to cut traces on the PCB.

An unused **output** may be left unconnected. However, if the output is held in tristate, it is recommended to weakly bias the output to a valid logic level to prevent increased supply current. It is suggested that it be routed to a test point or similar accessible structure in case the associated function needs to be utilized as part of a design revision.

9 PACKAGING INFORMATION



Notes:

1. All linear dimensions are in millimeters. Dimensioning and tolerancing are as per ISO/TS 128-71:2010
2. The part is compliant with JEDEC MO-153 specifications.

* Body width does **not** include interlead flash. Interlead flash shall not exceed 0.25 mm each side.

** Body length does **not** include mold flash, protrusion, or gate burrs. Mold flash, protrusions, and gate burrs shall not exceed 0.15 mm on each side.

Figure 15: Package Mechanical Drawing

10 ORDERING INFORMATION

Example part numbers for the AP54RHC804 are listed in [Table 10](#). The full list of options for this part can be found in [Figure 16](#). For a detailed description of product grades, please refer to [Product Grades and Quality Flows document](#). Please contact Apogee Semiconductor sales at sales@apogeesemi.com for further information on sampling, lead time and purchasing on specific part numbers.

Table 10: AP54RHC804 Ordering Information

DEVICE	DESCRIPTION	PACK-AGING	PACKAGE	LEAD FINISH	STATUS
AP54RHC804ANT-R	Rad-Hard 8-Channel Level Translator, A-Grade Flight (LEO)	Reel	TSSOP-20	NiPdAu	Available
AP54RHC804BNT-R	Rad-Hard 8-Channel Level Translator, B-Grade Flight (LEO)	Reel	TSSOP-20	NiPdAu	Available
AP54RHC804CNT-R	Rad-Hard 8-Channel Level Translator, C-Grade Flight (LEO)	Reel	TSSOP-20	NiPdAu	Available
AP54RHC804ENT-R	8-Channel Level Translator E-Grade (for evaluation only)	Reel	TSSOP-20	NiPdAu	Available

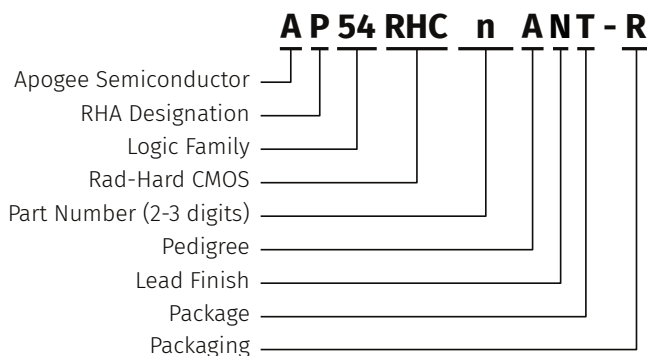


Figure 16: Part Number Decoder

- RHA Designation
 - P** 30 krad (Si)
 - F** 300 krad (Si)
- Part Number
 - _** 804 (8-Channel Level Translator)
- Pedigree
 - A** -55 to +125 °C (Burn-in)
 - B** -55 to +125 °C (No burn-in)
 - C** 25 °C (No burn-in)
 - E** 25 °C Functional Test Only (Evaluation)
- Lead Finish
 - N** Nickel-Palladium-Gold (NiPdAu)
- Package
 - T** 20-pin Thin Shrink Small Outline Package (TSSOP)
- Packaging
 - R** Tape and Reel⁽¹⁾

⁽¹⁾ [Contact us](#) for custom reel quantities. Orders less than full reel quantities may be shipped as cut tape.

11 REVISION HISTORY

REVISION	DESCRIPTION	DATE
C00	Initial release	2026-May-28

For the latest version of this document, please visit <https://www.apogeesemi.com>.

12 LEGAL

All product, product specifications and data are subject to change without notice.

Apogee Semiconductor provides technical data (such as datasheets), design resources (including reference designs), reliability data (including performance in radiation environments), application or other design advice, safety information, and other resources **“as is”** and with all faults, and disclaims all warranties, express and implied, including without limitation any implied warranties of merchantability, fitness for a particular purpose or non-infringement of third party intellectual property rights. These resources are intended for skilled engineers with understanding of high reliability and high radiation environments and its complexities.

Apogee Semiconductor is not responsible for: (1) selecting the suitable products for a given application, (2) designing, verifying, validating and testing it, or (3) ensuring that it meets any performance, safety, security, or other requirements. These resources are subject to change without advance notice. The use of these resources is restricted to the development of an application that uses the Apogee Semiconductor products described in them. Other reproduction and display of these resources is prohibited. No license is granted to any other Apogee Semiconductor intellectual property right or to any third-party intellectual property right.

Apogee Semiconductor disclaims responsibility and reserves the right to demand indemnification for any claims, damages, costs, losses, and liabilities arising out of wrongful use of these resources. The products are provided subject to Apogee Semiconductor’s [Terms of Sale](https://www.apogeesemi.com/terms) (<https://www.apogeesemi.com/terms>) or other applicable terms provided in conjunction with applicable products. The provision of these resources does not expand or otherwise alter applicable warranties or warranty disclaimers for Apogee Semiconductor products.

Purchasers of these products acknowledge that they may be subject to and agree to abide by the United States laws and regulations controlling the export of technical data, computer software, electronic hardware and other commodities. The transfer of such items may require a license from the cognizant agency of the U.S. Government.

Versal, and combinations thereof are trademarks of Advanced Micro Devices, Inc.